

FULTON COUNTY COMMUNITY RESILIENCE HUB

Alex Trachtenberg, Southface Institute
Kenneth Darisaw, Fulton County

WHAT IS RESILIENCE?

Community Resilience:

Capability to anticipate, prepare for, respond to, and recover stronger from significant threats or stresses, maximizing social, economic, and environmental benefits.

Climate Resilience:

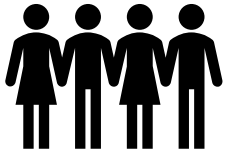
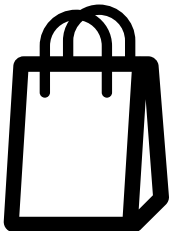
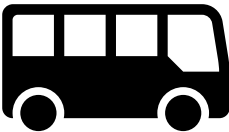
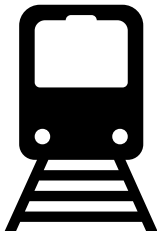
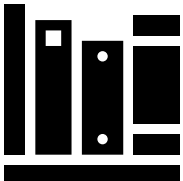
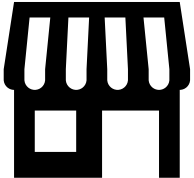
Reducing the causes of human-driven climate change (mitigation); preparing for and managing the impacts of climate change (adaptation); and doing both by applying a social and racial equity lens, with attention to procedural, distributional, structural, and transgenerational aspects of equity.

FULTON COUNTY SHOCKS AND STRESSORS

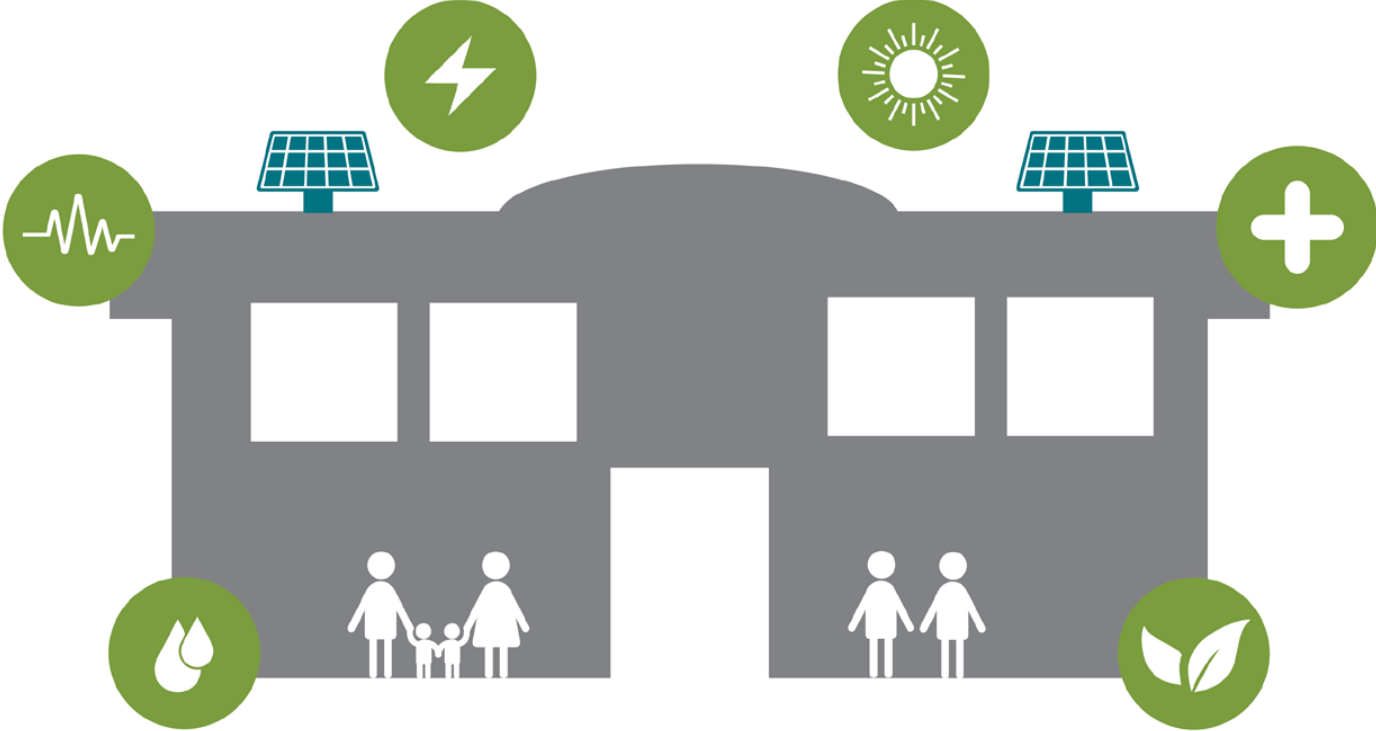
Resilience - Shocks & Stressors

-  Tornadoes, hurricanes
-  Code Red Heat Days
-  Pandemic
-  Ice Storm
-  Flooding
-  Physical or Cyberattack
-  Human Error & Mechanical Failure

COMMUNITY ASSETS



WHAT IS A RESILIENCE HUB?



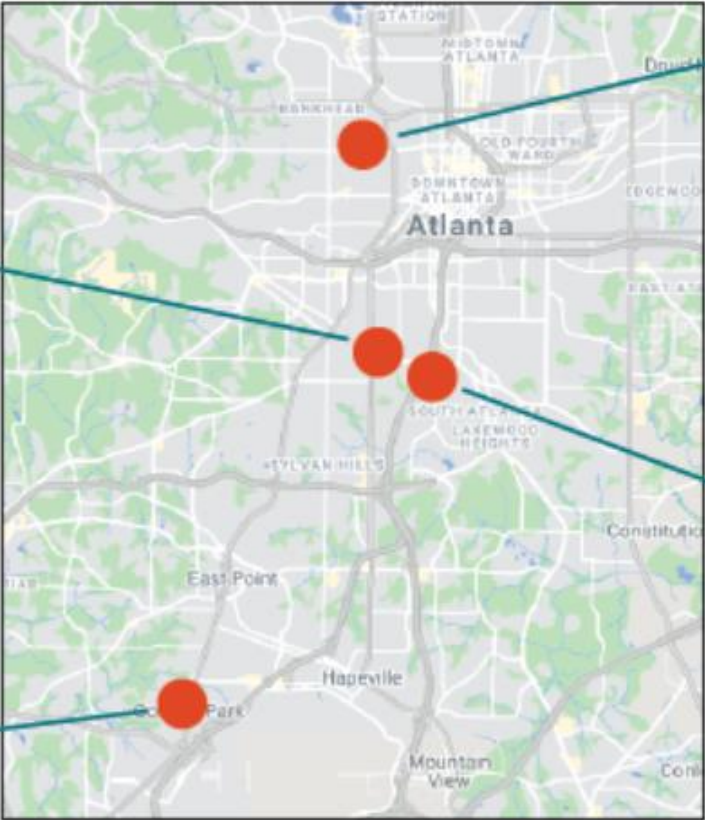
CANDIDATE FACILITIES / SITES



Metropolitan Branch Library



College Park Regional Health Center



Neighborhood Union Health Center



Louise Watley Library at Southeast

PROJECT GOALS AND TIMELINE

Primary Goal: Enhance the first and second tiers of community resilience and increase adaptive capacity while reducing vulnerability to stressors created by climate change and social conditions in Fulton County, GA.

2020-2021:

- Complete technical / economic analyses and assessments of each candidate facility (4) for solar+storage, rainwater harvesting, etc. for site selection of the Community Resilience Hub (Hub) (1)
- Community outreach and engagement informs site selection and guides implementation of the Hub
- Fulton County incorporates Hubs and sustainable and resilient practices as part of design, construction and operations guidelines
- Implement the Community Resilience Hub
- Share lessons learned, process and experience with community members and stakeholders

COMMUNITY OUTREACH/ENGAGEMENT/PARTNERSHIPS

- Outreach meetings with community groups, organizations and stakeholders
 - Awareness, information, partnerships
- Engagement sessions
 - Q1 / Q2 2021
 - Virtual and/or in-person (TBD)
 - Education, asset mapping, visioning and decision-making
- Please share contact info to participate
 - atrachtenberg@southface.org

SOCIAL MEDIA KIT / DIGITAL OUTREACH

Please share via communications channels – Facebook, Twitter, Instagram, LinkedIn, Nextdoor, Newsletters, Website, etc.

Toolkit:

<https://drive.google.com/file/d/13SNfNDp5jXQsjNen3YtN9pG23YvQnxVt/view?usp=sharing>

One-Sheet Handout: <https://4553qr1wvuj43kndml31ma60-wpengine.netdna-ssl.com/wp-content/uploads/2020/07/Fulton-County-Resilience-Hub.pdf>

- *How can communities ensure equitable access to electricity during emergencies? Resilience hubs are one way. #futurecities #climateresilience*
- *Resilience hubs are a solution in climate-related emergencies, but how would they help the COVID-19 pandemic? They can act as distribution centers for PPE and everyday necessities, shelter, testing sites and more. #futurecities #climateresilience*

Questions? Comments?

THANK YOU!!

Alex Trachtenberg

Senior Project Manager, Southface

atrachtenberg@southface.org

Kenneth Darisaw

Energy & Sustainability, Fulton County

Kenneth.Darisaw@fultoncountyga.gov